

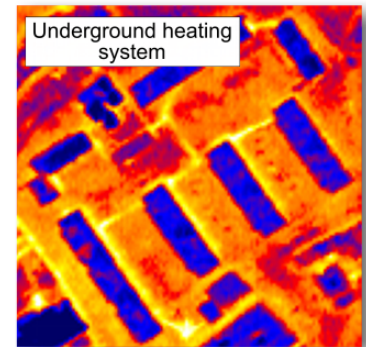


**hotmapping**.co.uk  
HOT MAPPING

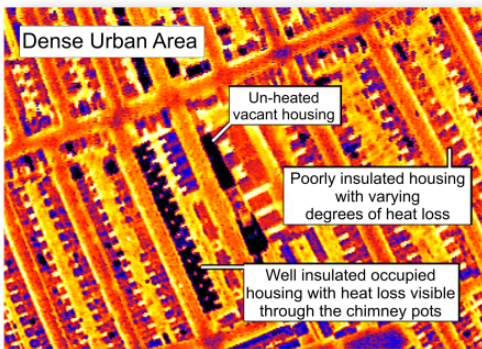
Geo-rectifying imagery for business and government

Hotmapping have aerial infra-red survey data covering most London boroughs available immediately. The data can help you identify:

- Heat loss from buildings**
- Underground heating systems**
- Poorly insulated housing stock**
- Energy wasting businesses**

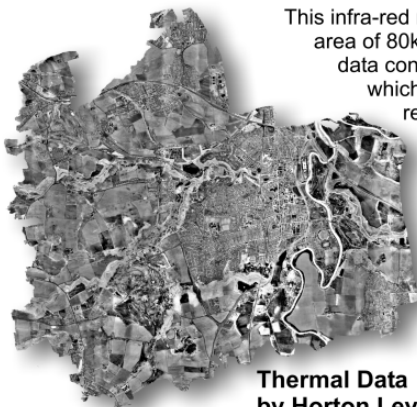


Schools, hospitals, houses and factories are all covered.



Mostly flown during Winter 2000, at a little over 2000 ft, this huge survey is unlikely to be ever repeated. The data is available in raw greyscale format, coloured, or geo-rectified to become a layer in your GIS system.

The survey was carried out by the highly respected specialist firm, Horton Levi Ltd, using military specification equipment. These data sets are now being made available at a fraction of the cost of a newly commissioned survey.



This infra-red map covers an area of 80km<sup>2</sup>. The original data consisted of 2,500 images, which were individually geo-rectified and seamlessly stitched together. The result is a complete aerial map of urban and rural areas which precisely overlays OS map data.

**Thermal Data  
by Horton Levi Ltd**

**For more information  
or an immediate quote  
please e-mail us at  
[info@hotmapping.co.uk](mailto:info@hotmapping.co.uk)**